

AWB

always · wear · better

t: 01288 353281

w: awbtextiles.co.uk

e: info@awbtextiles.co.uk



About us

AWB have been supporting healthcare professionals and patients with scrub suits and garments for over 75 years. In fact, we have been supplying the NHS since before it was the NHS and we are proud to continue to do so.

For more than three quarters of a century AWB have honed and developed our expertise in the healthcare apparel sector. As well as our own bespoke range of products we have sought out and selected like-minded brands and suppliers to deliver the high-quality range of products that healthcare professionals have come to expect from our trusted family company.

Innovation runs in the family. Established in 1946 our grandfather, Dennis William Cook saw an opportunity to create a specialist firm to supply the healthcare industry with medical apparel. He acquired A. W. Bent Limited, a well-established hat-lining business in Luton and shifted its focus to the manufacture of healthcare apparel.

The business was relocated to Cornwall in the 1960s and Dennis' sons; Cedric, Bill and Ross continued to take the business forward. The second generation of Cooks to run A. W. Bent introduced additional product lines, diversified the supply chain and grew the business.

In 2023, the business was passed to the third generation of Cooks, (Greg and James) and we are committed to carry on our family's legacy and continue to provide quality products to the healthcare sector.

AWB always.wear.better



Our product range

Navigate our brochure by clicking on your preferred brand.

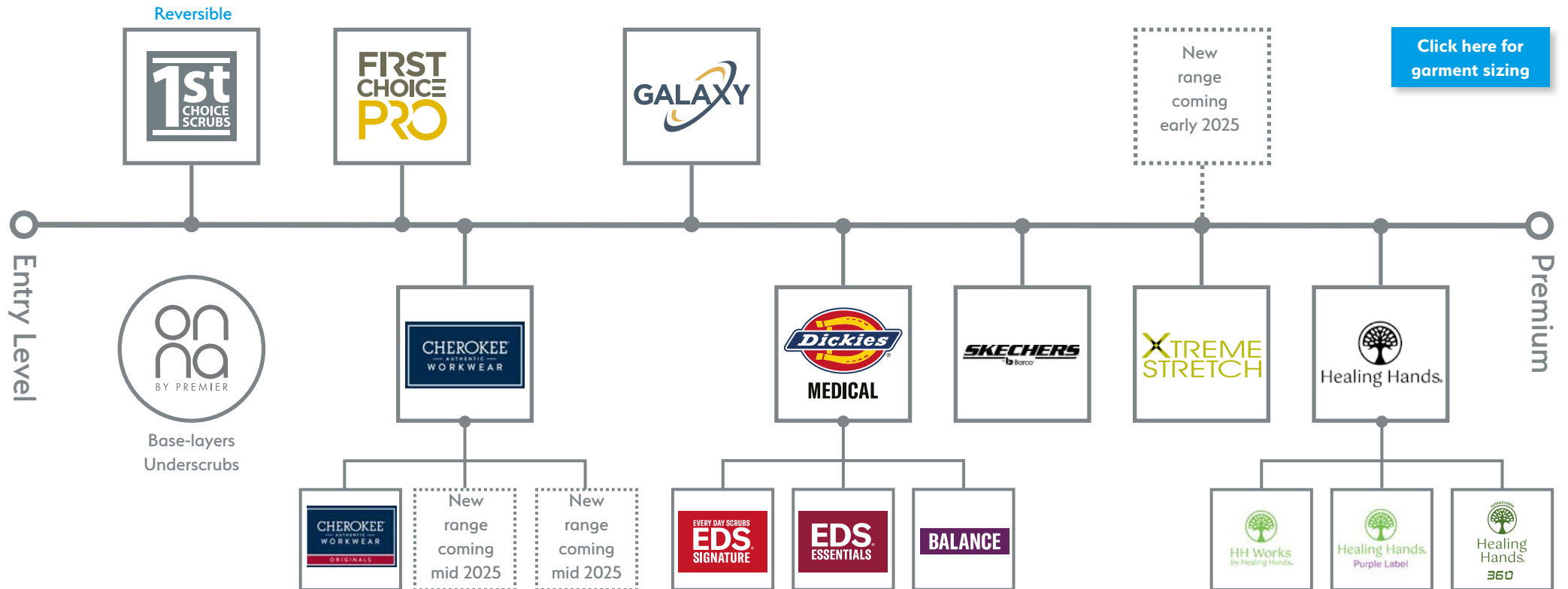
Drawing upon over 75 years of industry experience, we at AWB have designed and developed a range of our own bespoke products for healthcare professionals.

Quality is at the heart of our offer and we are continually looking to improve and develop our products in response to new technology, sustainability and valuable feedback from our customers.

To compliment our own brands, AWB have carefully selected a range of partner brands to provide a wide variety of scrub suit uniforms to meet the demands of today's healthcare professionals at every price-point.

AWB always.wear.better

AWB own brands



Selected partner brands



Healing
Hands.

The Healing Hands range

AWB are delighted to offer Healing Hands as our premium range of scrubs.

Embodying our ethos of seeking to always wear.better, the 3 Healing Hands ranges we supply offer un-rivalled comfort and style in both female and male fits.

The modern fabrics of Healing Hands provide freedom of movement, breathable, easy care and durable garments. Available in a range of colours enables tunic tops and trousers to be mixed and matched to create multiple aesthetic combinations. Can be bought as a suit and or separates.

The ranges is as follows:



With the **HH Works** collection, you work all day long, so you need scrubs that can keep up. Made from a soft blend of four-way stretch polyester and spandex to be lightweight, breathable, durable, and stylish. This modern fit collection features soft, lightweight stretch fabric that promotes comfort and mobility while quickly wicks away moisture.



Look Good, Feel Great. That's why the **Healing Hands Purple Label** scrubs were created. Made from a polyester-rayon-spandex stretch blend that promotes comfort and mobility, this innovative fabric creates a completely unique user experience that's designed to carry you through your workday.



We are proud that the **Healing Hands 360** collection is made with recycled polyester fabric. The result is an easy care 4-way stretch fabric that's strong, wrinkle and fade resistant – and sustainable. When you wear our clothes, you'll be wearing something that was once part of a plastic bottle but now has been reborn into your new favourite piece of clothing. This collection is our premium athleisure line.

AWB
always · wear · better



Model is wearing Navy.

AWB are delighted to offer Healing Hands as our premium range of scrubs.

With the **HH Works** collection, you work all day long, so you need scrubs that can keep up. Made from a soft blend of four-way stretch polyester and spandex to be lightweight, breathable, durable, and stylish. This modern fit collection features soft, lightweight stretch fabric that promotes comfort and mobility while quickly wicks away moisture.

The modern fabrics of Healing Hands provide freedom of movement, breathable, easy care and durable garments. Available in a range of colours enables tunic tops and trousers to be mixed and matched to create multiple aesthetic combinations. Can be bought as a suit and or separates.



Model is
wearing
Ciel.

Monica top & Rebecca pant

AWB are delighted to offer Healing Hands as our premium range of scrubs. With the **HH Works** collection, you work all day long, so you need scrubs that can keep up. Made from a soft blend of four-way stretch polyester and spandex to be lightweight, breathable, durable, and stylish. This modern fit collection features soft, lightweight stretch fabric that promotes comfort and mobility while quickly wicks away moisture.

Can be bought as a suit and or separates.

Checkout our base-layers and underscrubs on the back page.

Personalise your uniform with our in-house embroidery service.

[Click here for garment sizing](#)

Fit: Female

Fabric: 91% polyester
9% spandex

Monica Top: [2500]
V-neck fitted
2x hip pockets
2x hip insert pockets
Side vents
Internal garment loop

Rebecca Trousers/Pant: [9560]
Elasticated drawstring waistband
Standard leg
2x zip hip pockets
2x cargo pockets on one side with pen insert
Internal garment loop

Available in TALL and SHORT fits by request

available sizes: (extra sizes by request)

- XS
- S
- M
- L
- XL
- 2XL

available colours:

- Navy
- Wine
- Pewter
- Khaki
- Black
- Eggplant
- Royal Blue
- White
- Caribbean
- Mid Blue/Ciel
- Hunter Green
- Olive
- Teal



Model is wearing Caribbean.

Madison top & Renee jogger

AWB are delighted to offer Healing Hands as our premium range of scrubs. With the **HH Works** collection, you work all day long, so you need scrubs that can keep up. Made from a soft blend of four-way stretch polyester and spandex to be lightweight, breathable, durable, and stylish. This modern fit collection features soft, lightweight stretch fabric that promotes comfort and mobility while quickly wicks away moisture.

Can be bought as a suit and or separates.

- | | |
|-----------------------------------|--|
| Fit: | Female |
| Fabric: | 91% polyester
9% spandex |
| Madison Top:
[2525] | Mock-wrap V-neck fitted
Princess seams
2x hip pockets
1x hip insert phone pocket
1x hip insert pocket
Side vents |
| Renee
Trousers/Pant:
[9575] | Elasticated
drawstring waistband
Jogger leg
2x zip hip patch pockets
2x rear pockets
1x cargo pocket
Internal garment loop
Available in TALL
and SHORT fits by request |

Checkout our
base-layers and
underscrubs on
the back page.

Personalise your
uniform with
our in-house
embroidery
service.

[Click here for
garment sizing](#)

available sizes: (extra sizes by request)



available colours: (extra colours by request)



Model is wearing Navy.

AWB are delighted to offer Healing Hands as our premium range of scrubs. With the **HH Works** collection, you work all day long, so you need scrubs that can keep up. Made from a soft blend of four-way stretch polyester and spandex to be lightweight, breathable, durable, and stylish. This modern fit collection features soft, lightweight stretch fabric that promotes comfort and mobility while quickly wicks away moisture.

Can be bought as a suit and or separates.

Fit: Female

Fabric: 91% polyester
9% spandex

Top: Currently not available

Rhea
Trousers/Pant:
[050] Hybrid rib knit
elasticated drawstring
waistband
Jogger leg with rib knit
cuff
2x zip hip pockets
1x insert zip hip pocket
2x rear pockets
2x cargo pockets with pen
inserts
Internal garment loop
Available in TALL
and SHORT fits by request

Checkout our
base-layers and
underscrubs on
the back page.

Personalise your
uniform with
our in-house
embroidery
service.

[Click here for
garment sizing](#)

available sizes: (extra sizes by request)

XS S M L XL 2XL

available colours: (extra colours by request)

 Navy
 Pewter
 Black



Top not currently available.

Model is wearing Black.

Maternity Mila top & Rose pant

AWB are delighted to offer Healing Hands as our premium range of scrubs. With the **HH Works** collection, you work all day long, so you need scrubs that can keep up. Made from a soft blend of four-way stretch polyester and spandex to be lightweight, breathable, durable, and stylish. This modern fit collection features soft, lightweight stretch fabric that promotes comfort and mobility while quickly wicks away moisture.

Can be bought as a suit and or separates.

- Fit:** Female Maternity
- Fabric:** 91% polyester
9% spandex
- Mila Top:** [2510]
V-neck maternity fit
2x hip pockets
Side stretch panels which grow with you and your baby.
- Rose Trousers/Pant:** [9510]
Rib knit soft elasticated over the bump waistband
Straight leg with vents
2x hip pockets
2x rear patch pockets
1x cargo pocket with pen & phone insert
Internal garment loop
Available in TALL and SHORT fits by request

Checkout our base-layers and underscrubs on the back page.

Personalise your uniform with our in-house embroidery service.

[Click here for garment sizing](#)

available sizes: (extra sizes by request)



available colours: (extra colours by request)



Model is wearing Navy.

Mathew top & Ryan pant

AWB are delighted to offer Healing Hands as our premium range of scrubs. With the **HH Works** collection, you work all day long, so you need scrubs that can keep up. Made from a soft blend of four-way stretch polyester and spandex to be lightweight, breathable, durable, and stylish. This modern fit collection features soft, lightweight stretch fabric that promotes comfort and mobility while quickly wicks away moisture.

Can be bought as a suit and or separates.

Fit: Male

Fabric: 91% polyester
9% spandex

Mathew Top: [2590]
V-neck modern fit
1x chest pocket w/pen insert
2x hip pockets w/pen inserts
1x hip insert phone pocket
1x hip insert pocket
Side vents

Ryan Trousers/Pant: [9590]
Hybrid elasticated drawstring waistband with button. Zip fly
Modern fit straight leg
2x hip pockets
2x rear velcro pockets
1x cargo pocket w/phone insert. Internal garment loop
Available in TALL and SHORT fits by request

Checkout our base-layers and underscrubs on the back page.






Personalise your uniform with our in-house embroidery service.

[Click here for garment sizing](#)

available sizes: (extra sizes by request)

XS S M L XL 2XL

available colours: (extra colours by request)

 Navy
 Pewter
 Black
 Royal Blue
 Caribbean



Model is wearing Pewter.

Healing Hands Purple Label

AWB are delighted to offer Healing Hands as our premium range of scrubs.

Look Good, Feel Great. That's why the **Healing Hands Purple Label** scrubs were created. Made from a polyester-rayon-spandex stretch blend that promotes comfort and mobility, this innovative fabric creates a completely unique user experience that's designed to carry you through your workday with a luxurious 2-way stretch fabric.

The modern fabrics of Healing Hands provide freedom of movement, breathable, easy care and durable garments. Available in a range of colours enables tunic tops and trousers to be mixed and matched to create multiple aesthetic combinations. Can be bought as a suit and or separates.



Model is wearing Pewter.

AWB are delighted to offer Healing Hands as our premium range of scrubs. Look Good, Feel Great. That's why the **Healing Hands Purple Label** scrubs were created. Made from a polyester-rayon-spandex stretch blend that promotes comfort and mobility, this innovative fabric creates a completely unique user experience that's designed to carry you through your workday with a luxurious 2-way stretch fabric.

Can be bought as a suit and or separates.

Fit:	Female
Fabric:	77% polyester 20% rayon 9% spandex
Journey Top: [2152]	Mandarin one button collar 2x hip pockets Boxy fit Sleeveless
Toby Trousers/Pant: [9244]	Elasticated drawstring waistband Jogger leg 2x zip hip pockets 2x rear pockets 2x cargo pockets 1x cargo zip pocket Available in TALL and SHORT fits by request

Checkout our base-layers and underscrubs on the back page.


Personalise your uniform with our in-house embroidery service.

[Click here for garment sizing](#)

available sizes: (extra sizes by request)

XS S M L XL 2XL

available colours: (extra colours by request)

 Navy
 Pewter
 Black



Model is wearing Black.

AWB are delighted to offer Healing Hands as our premium range of scrubs. Look Good, Feel Great. That's why the **Healing Hands Purple Label** scrubs were created. Made from a polyester-rayon-spandex stretch blend that promotes comfort and mobility, this innovative fabric creates a completely unique user experience that's designed to carry you through your workday with a luxurious 2-way stretch fabric.

Can be bought as a suit and or separates.

Fit: Female
Fabric: 77% polyester
20% rayon
9% spandex
Top: Currently not available

Tamara
Trousers/Pant:
[9181]
Elasticated
drawstring waistband
Standard leg vented
2x hip pockets
1x rear pocket
1x cargo pocket
1x cargo zip pocket
Pen insert
Available in TALL
and SHORT fits by request

Checkout our
base-layers and
underscrubs on
the back page.

Personalise your
uniform with
our in-house
embroidery
service.

[Click here for
garment sizing](#)

available sizes: (extra sizes by request)

XS S M L XL 2XL

available colours: (extra colours by request)

Navy
 Pewter
 Black



Top not currently available.

Model is wearing Navy.

Jake top & Dante pant

AWB are delighted to offer Healing Hands as our premium range of scrubs. Look Good, Feel Great. That's why the **Healing Hands Purple Label** scrubs were created. Made from a polyester-rayon-spandex stretch blend that promotes comfort and mobility, this innovative fabric creates a completely unique user experience that's designed to carry you through your workday with a luxurious 2-way stretch fabric.

Can be bought as a suit and or separates.

Fit: Male
Fabric: 77% polyester
 20% rayon
 9% spandex
Jake Top: V-neck modern fit
 [2331] 2x hip pockets
 1x pen pocket insert
 1x Chest pocket ID loop
Dante Knit elasticated
Trousers/Pant: drawstring waistband
 [9301] Zip fly. ID Loop
 Jogger leg with elasticated cuff
 2x zip hip pockets
 1x rear pocket
 1x cargo pocket
 Available in TALL and SHORT fits by request

Checkout our base-layers and underscrubs on the back page.

Personalise your uniform with our in-house embroidery service.

[Click here for garment sizing](#)

available sizes: (extra sizes by request)

- XS
- S
- M
- L
- XL
- 2XL

available colours: (extra colours by request)

- Navy
- Pewter
- Black



Model is wearing Black.

Daniel pant

AWB are delighted to offer Healing Hands as our premium range of scrubs. Look Good, Feel Great. That's why the **Healing Hands Purple Label** scrubs were created. Made from a polyester-rayon-spandex stretch blend that promotes comfort and mobility, this innovative fabric creates a completely unique user experience that's designed to carry you through your workday with a luxurious 2-way stretch fabric.

Can be bought as a suit and or separates.

Fit: Male

Fabric: 77% polyester
20% rayon
9% spandex

Top: Currently not available

Daniel
Trousers/Pant:
[9300] Elasticated
drawstring waistband
Zip fly. ID Loop
Straight leg
2x hip pockets
1x rear pocket
2x cargo pockets (1x zip)
Available in TALL
and SHORT fits by request

Checkout our base-layers and underscrubs on the back page.

Personalise your uniform with our in-house embroidery service.

[Click here for garment sizing](#)

available sizes: (extra sizes by request)

XS S M L XL 2XL

available colours: (extra colours by request)

Navy
 Pewter
 Black



Top not currently available.

Model is wearing Navy.



Healing
Hands.

360

Healing Hands 360°

AWB are delighted to offer Healing Hands as our premium range of scrubs.

We are proud that the **Healing Hands 360** collection is made with recycled polyester fabric. The result is an easy care 4-way stretch fabric that's strong, wrinkle and fade resistant – and sustainable. When you wear our clothes, you'll be wearing something that was once part of a plastic bottle but now has been reborn into your new favourite piece of clothing.

This collection is our premium athleisure line.

The modern fabrics of Healing Hands provide freedom of movement, breathable, easy care and durable garments. Available in a range of colours enables tunic tops and trousers to be mixed and matched to create multiple aesthetic combinations. Can be bought as a suit and or separates.



AWB
always·wear·better



Model is
wearing
Pewter.



Skyler top & Niko pant

AWB are delighted to offer Healing Hands as our premium range of scrubs. We are proud that the **Healing Hands 360** collection is made with recycled polyester fabric. The result is an easy care 4-way stretch fabric that's strong, wrinkle and fade resistant – and sustainable. When you wear our clothes, you'll be wearing something that was once part of a plastic bottle but now has been reborn into your new favourite piece of clothing. This collection is our premium athleisure line.

Can be bought as a suit and or separates.

Fit: Female
 Fabric: 55% Recycled polyester
 37% polyester
 8% spandex

Skyler Top: V-neck modern athletic
 [32285] 2x hip pockets
 2x hip pockets
 Side vents

Niko Trousers/Pant: Modern athletic fit
 [39157] Elasticated waistband
 Tapered standard leg
 2x zip hip pockets
 2x cargo pockets on one side
 Available in TALL and SHORT fits by request

Checkout our base-layers and underscrubs on the back page.

Personalise your uniform with our in-house embroidery service.

[Click here for garment sizing](#)

available sizes: (extra sizes by request)

- XS
- S
- M
- L
- XL
- 2XL

available colours: (extra colours by request)

- Navy
- Pewter
- Black



Model is wearing Navy.



Healing Hands.

360

Sandy top & Naya pant

AWB are delighted to offer Healing Hands as our premium range of scrubs. We are proud that the **Healing Hands 360** collection is made with recycled polyester fabric. The result is an easy care 4-way stretch fabric that's strong, wrinkle and fade resistant – and sustainable. When you wear our clothes, you'll be wearing something that was once part of a plastic bottle but now has been reborn into your new favourite piece of clothing. This collection is our premium athleisure line.

Can be bought as a suit and or separates.

Fit: Female Modern Athletic

Fabric: 55% Recycled polyester
37% polyester
8% spandex

Sandy Top: Mandarin collar
Boxy zip top comfy fit
2x hip insert pockets
Side vents

Naya Trousers/Pant: Elasticated drawstring waistband
Jogger leg with knit cuff
2x zip hip pockets
2x rear pockets
1x cargo pocket
1x zip cargo pocket
Available in TALL and SHORT fits by request

Checkout our base-layers and underscrubs on the back page.

Personalise your uniform with our in-house embroidery service.

[Click here for garment sizing](#)

available sizes: (extra sizes by request)

- XS S M L XL 2XL

available colours: (extra colours by request)

- Navy
- Pewter
- Black



Model is wearing Pewter.



Healing Hands.

360

Spencer top & Nolen pant

AWB are delighted to offer Healing Hands as our premium range of scrubs. We are proud that the **Healing Hands 360** collection is made with recycled polyester fabric. The result is an easy care 4-way stretch fabric that's strong, wrinkle and fade resistant – and sustainable. When you wear our clothes, you'll be wearing something that was once part of a plastic bottle but now has been reborn into your new favourite piece of clothing. This collection is our premium athleisure line.

Can be bought as a suit and or separates.

Fit: Male Modern
Fabric: 55% Recycled polyester
37% polyester
8% spandex

Spencer Top: V-neck modern athletic
[32381]
1x chest pocket with pen insert
Side vents

Nolen Trousers/Pant: Elasticated drawstring waistband. Zip fly
[39172]
Jogger leg with knit cuff
2x hip pockets
2x rear pockets
1x cargo pocket
1x zip cargo pocket
Available in TALL and SHORT fits by request

Checkout our base-layers and underscrubs on the back page.

Personalise your uniform with our in-house embroidery service.

[Click here for garment sizing](#)

available sizes: (extra sizes by request)

- XS S M L XL 2XL

available colours: (extra colours by request)

- Navy
- Pewter
- Black



Model is wearing Pewter.



Healing Hands.

360

Steven top & Noah pant

AWB are delighted to offer Healing Hands as our premium range of scrubs. We are proud that the **Healing Hands 360** collection is made with recycled polyester fabric. The result is an easy care 4-way stretch fabric that's strong, wrinkle and fade resistant – and sustainable. When you wear our clothes, you'll be wearing something that was once part of a plastic bottle but now has been reborn into your new favourite piece of clothing. This collection is our premium athleisure line.

Can be bought as a suit and or separates.

Fit: Male Modern
Fabric: 55% Recycled polyester
37% polyester
8% spandex

Steven Top: [32382]
V-neck
2x hip pockets
1x chest pocket with pen insert
Side vents

Noah Trousers/Pant: [39173]
Elasticated drawstring waistband. Zip fly
Straight standard leg
2x hip pockets
2x rear pockets
1x cargo pocket with pen insert
1x zip cargo pocket
Available in TALL and SHORT fits by request

Checkout our base-layers and underscrubs on the back page.

Personalise your uniform with our in-house embroidery service.

[Click here for garment sizing](#)

available sizes: (extra sizes by request)

- XS S M L XL 2XL

available colours: (extra colours by request)

- Navy
- Pewter
- Black



Model is wearing Black.

Carly jacket

AWB are delighted to offer Healing Hands as our premium range of scrubs. We are proud that the **Healing Hands 360** collection is made with recycled polyester fabric. The result is an easy care 4-way stretch fabric that's strong, wrinkle and fade resistant – and sustainable. When you wear our clothes, you'll be wearing something that was once part of a plastic bottle but now has been reborn into your new favourite piece of clothing. This collection is our premium athleisure line.

Can be bought as a suit and or separates.

Fit: Female
 Fabric: 55% Recycled polyester
 37% polyester
 8% spandex

Carly Jacket: [35068]
 Zip front with reflective accents for advisability
 2x zip hip pockets
 2x internal pockets
 1x internal phone pocket
 Knit cuffs

Checkout our base-layers and underscrubs on the back page.

Personalise your uniform with our in-house embroidery service.

[Click here for garment sizing](#)

available sizes: (extra sizes by request)

- XS
- S
- M
- L
- XL
- 2XL

available colours:

- Navy
- Black



Model is wearing Noya trouser.

Model is wearing Black.

Samuel jacket

AWB are delighted to offer Healing Hands as our premium range of scrubs. We are proud that the **Healing Hands 360** collection is made with recycled polyester fabric. The result is an easy care 4-way stretch fabric that's strong, wrinkle and fade resistant – and sustainable. When you wear our clothes, you'll be wearing something that was once part of a plastic bottle but now has been reborn into your new favourite piece of clothing. This collection is our premium athleisure line.

Can be bought as a suit and or separates.

Fit: Male
 Fabric: 55% Recycled polyester
 37% polyester
 8% spandex

Samuel Jacket: Bomber jacket style with elasticated base
 [35350] Zip front with reflective accents for visibility
 2x zip hip pockets
 2x internal pockets
 1x internal phone pocket
 1x internal pen pocket
 Knit cuffs

Checkout our base-layers and underscrubs on the back page.

Personalise your uniform with our in-house embroidery service.

[Click here for garment sizing](#)

available sizes: (extra sizes by request)

- XS
- S
- M
- L
- XL
- 2XL

available colours:

- Navy
- Black



Model is wearing Nolan trouser.

Model is wearing Navy.

AWB were the first UK company to introduce Dickies scrubs to the UK on 2010. We are delighted to continue our partnership with this global partner brand.

Xtreme stretch is a premium Dickies brand in a soft, breathable, 4-way stretch fabric ensuring comfort and freedom of movement. Available in a range of colours enables tunic tops and trousers to be mixed and matched to create multiple aesthetic combinations. Not suitable for industrial laundering. Can be bought as a suit and or separates.

Fit: Female Contemporary

Fabric: 75% polyester
21% rayon
4% spandex

82851 Tunic Top: V-neck
Princess Seams
2x hip pockets
1x inset pocket
Front vents
ID loop

DK020 Trousers/
Pant Drawstring elasticated
rib knit waist
Standard vented leg
2x cargo pockets
2x hip pockets
2x rear pockets
ID loop

Checkout our
base-layers and
underscrubs on
the back page.

Personalise your
uniform with
our in-house
embroidery
service.

[Click here for
garment sizing](#)

available sizes:

XS S M L XL 2XL 3XL

available colours:

 Navy	 Teal
 Pewter	 Hunter Green
 Black	 Wine
 Royal Blue	 Eggplant
 Mid Blue/Ciel	 Caribbean



Model is
wearing Navy.



Breeze top & Breeze pant

AWB are delighted to be able to make your workday better with Skechers Scrubs.

Combining the renowned comfort and quality you expect from Skechers, these scrubs are designed to keep you feeling and performing your best throughout your shift. Made with innovative, moisture-wicking, and breathable materials, Skechers healthcare uniforms ensure you stay cool and dry, while the stain-release fabric makes cleaning up spills a breeze. Featuring a comfortable 4-way stretch fabric, they provide exceptional freedom of movement for all-day comfort, allowing you to go that extra mile with ease.

But these scrubs aren't just about comfort – they're also an eco-conscious choice. Each set of scrubs (top and trousers) is crafted with recycled content fabric, using approximately 14 recycled plastic bottles. Look and feel your best while doing your part for the planet – choose Skechers today.

Available in sizes XS-2XL and up to 12 colours

Can be bought as a suit and or separates.



Model is wearing Black.



AWB are delighted to offer Skechers scrubs. Combining the renowned comfort and quality you expect from Skechers, these scrubs are made with innovative, moisture-wicking, and breathable materials to ensure you stay cool and dry. Featuring a comfortable 4-way stretch fabric and a stain-release fabric, they provide exceptional freedom of movement for all-day comfort. Each set of scrubs (top and trousers) is crafted with recycled content fabric, using approximately 14 recycled plastic bottles.

Can be bought as a suit and or separates.

Fit: Female
Fabric: 54% polyester
40% recycled polyester
6% spandex with soil release

Breeze Top: V-neck fitted
[SK101] 2x hip pockets
1x hip insert pocket

Breeze Trousers/Pant: Branded soft
[SK202] Elasticated waistband
Standard vented leg
2x hip pockets
1x cargo pocket with pen insert

Checkout our base-layers and underscrubs on the back page.

Personalise your uniform with our in-house embroidery service.

[Click here for garment sizing](#)

available sizes: (extra sizes by request)

- XS
- S
- M
- L
- XL
- 2XL

available colours:

- Navy
- Grape
- Pewter
- Eggplant
- Black
- Galaxy Blue
- Bahama
- Mid Blue/Ciel
- Hunter Green
- Wine
- Teal



Model is wearing Bahama.

AWB are delighted to offer Skechers scrubs. Combining the renowned comfort and quality you expect from Skechers, these scrubs are made with innovative, moisture-wicking, and breathable materials to ensure you stay cool and dry. Featuring a comfortable 4-way stretch fabric and a stain-release fabric, they provide exceptional freedom of movement for all-day comfort. Each set of scrubs (top and trousers) is crafted with recycled content fabric, using approximately 14 recycled plastic bottles.

Can be bought as a suit and or separates.

Fit: Female

Fabric: 54% polyester
40% recycled polyester
6% spandex with soil release

Reliance Top: [SK102]
Mock-wrap V-neck fitted
2x hip pockets
1x hip insert pocket

Reliance Trousers/Pant: [SK201]
Hybrid elasticated drawstring waistband
Standard vented leg
2x hip pockets
1x cargo pocket with pen insert

Checkout our base-layers and underscrubs on the back page.

Personalise your uniform with our in-house embroidery service.

[Click here for garment sizing](#)

available sizes: (extra sizes by request)

- XS
- S
- M
- L
- XL
- 2XL

available colours:

- Navy
- Pewter
- Black
- Galaxy Blue
- Bahama
- Mid Blue/Ciel
- Hunter Green
- Wine
- Teal
- Grape
- Eggplant



Model is wearing Navy.

AWB are delighted to offer Skechers scrubs. Combining the renowned comfort and quality you expect from Skechers, these scrubs are made with innovative, moisture-wicking, and breathable materials to ensure you stay cool and dry. Featuring a comfortable 4-way stretch fabric and a stain-release fabric, they provide exceptional freedom of movement for all-day comfort. Each set of scrubs (top and trousers) is crafted with recycled content fabric, using approximately 14 recycled plastic bottles.

Can be bought as a suit and or separates.

- Fit: Unisex
- Fabric: 54% polyester
40% recycled polyester
6% spandex with soil release
- Structure Top: V-neck
[SK0112]
1x chest pocket with
2x chest insert pockets
Part vented sides
Shoulder loop
- Structure Trousers/Pant: Hybrid elasticated
[SK0215]
drawstring waistband
Zip fly
Standard leg
2x hip pockets
1x rear pocket
1x cargo pocket
with pen insert

Checkout our base-layers and underscrubs on the back page.

Personalise your uniform with our in-house embroidery service.

[Click here for garment sizing](#)

available sizes: (extra sizes by request)

- XS
- S
- M
- L
- XL
- 2XL

available colours:

- Navy
- Grape
- Pewter
- Eggplant
- Black
- Galaxy Blue
- Bahama
- Mid Blue/Ciel
- Hunter Green
- Wine
- Teal



Model is wearing Pewter.

AWB are delighted to offer Skechers scrubs. Combining the renowned comfort and quality you expect from Skechers, these scrubs are made with innovative, moisture-wicking, and breathable materials to ensure you stay cool and dry. Featuring a comfortable 4-way stretch fabric and a stain-release fabric, they provide exceptional freedom of movement for all-day comfort. Each set of scrubs (top and trousers) is crafted with recycled content fabric, using approximately 14 recycled plastic bottles.

Can be bought as a suit and or separates.

Fit: Unisex

Fabric: 54% polyester
40% recycled polyester
6% spandex with soil release

Thesis Top: Round-neck
[SKT193] 1x chest pocket with pen insert
2x hip pockets-
Part vented sides
Shoulder loop

Structure Jogger Hybrid elasticated
Trousers/Pant: drawstring waistband
[SKP572] Zip fly
Jogger leg with knit cuff
2x hip pockets
1x cargo pocket

Checkout our base-layers and underscrubs on the back page.

Personalise your uniform with our in-house embroidery service.

[Click here for garment sizing](#)

available sizes: (extra sizes by request)

- XS
- S
- M
- L
- XL
- 2XL

available colours:

Thesis Top

- Navy
- Pewter
- Black
- Bahama
- Royal Blue
- Hunter Green

Structure Jogger

- Navy
- Pewter
- Black
- Bahama
- Mid Blue/Ciel



Model is wearing Black.



MEDICAL

The Dickies EDS range

AWB were the first UK company to introduce Dickies scrubs to the UK on 2010. We are delighted to continue our partnership with this global partner brand.

The Dickies Medical range is split into 3 sub-brands:

- EDS Signature
- EDS Essentials
- Balance

Available in a range of colours enables tunic tops and trousers to be mixed and matched to create multiple aesthetic combinations. Can be bought as a suit and or separates.

The ranges is as follows:



Every Day Scrubs (EDS) Signature Range is the entry level Dickies Medical Range. Made from a robust polyester/cotton fabric blend, the garments do exactly what they say on the tin. They will deliver a breathable high quality finish for the demanding environment, day-in and day-out. Available in a wide range of colours.



Every Day Scrubs (EDS) Essentials is an evolution of the Signature range and introduces female and male fit garments which have a 4-way stretch, wrinkle-free polyester fabrics. This gives an enhanced level of comfort and movement within the garment. The fabrics also feature moisture wicking technology.



The Dickies Balance range builds upon the principles of EDS Essentials by offering an enhanced softer fabric whilst still retaining a 2-way stretch element to focus upon providing user comfort.

AWB
always · wear · better



Model is wearing Wine.



AWB were the first UK company to introduce Dickies scrubs to the UK on 2010. We are delighted to continue our partnership with this global partner brand. Dickies EDS Signature range is the durable and comfortable entry level range from Dickies.

Available in a range of colours enables tunic tops and trousers to be mixed and matched to create multiple aesthetic combinations. Suitable for industrial laundering. Can be bought as a suit and or separates.

Checkout our base-layers and underscrubs on the back page.

Personalise your uniform with our in-house embroidery service.

[Click here for garment sizing](#)



Model is wearing Eggplant.

Fit: Unisex
Fabric: 45% polyester
55% brushed cotton

available sizes: (extra sizes by request)

- XS
- S
- M
- L
- XL
- 2XL
- 3XL

available colours: (extra colours by request)

- Navy
- Ciel
- Pewter
- Teal
- Black
- Royal Blue
- Wine
- Caribbean
- Hunter Green
- Eggplant

86706 Tunic Top: V-neck
Traditional fit
2x hip pockets
1x phone pocket
Side vents

86106 Trousers/
Pant: Elasticated waist
Modern Classic fit
Tapered leg
2x cargo pockets
1x phone pocket
1x scissor pocket

AWB were the first UK company to introduce Dickies scrubs to the UK on 2010. We are delighted to continue our partnership with this global partner brand. Dickies EDS Signature range is the durable and comfortable entry level range from Dickies.

Available in a range of colours enables tunic tops and trousers to be mixed and matched to create multiple aesthetic combinations. Suitable for industrial laundering. Can be bought as a suit and or separates.

Fit: Unisex
 Fabric: 45% polyester
 55% brushed cotton

83706 Tunic Top: V-neck
 Traditional fit
 1x chest pockets
 1x pen insert pocket
 ID loop

83006 Trousers/
 Pant Drawsting waist
 Traditional fit
 Standard leg
 1x rear pocket

Checkout our base-layers and underscrubs on the back page.

Personalise your uniform with our in-house embroidery service.

[Click here for garment sizing](#)

available sizes: (extra sizes by request)

- XS
- S
- M
- L
- XL
- 2XL
- 3XL

available colours: (extra colours by request)

- Navy
- Ciel
- Pewter
- Teal
- Black
- Royal Blue
- Wine
- Caribbean
- Hunter Green
- Eggplant



Models is wearing Navy.

AWB were the first UK company to introduce Dickies scrubs to the UK on 2010. We are delighted to continue our partnership with this global partner brand.

Dickies EDS Essentials is a breathable moisture-wicking, 4-way stretch fabric, ensuring comfort and freedom of movement. Available in a range of colours enables tunic tops and trousers to be mixed and matched to create multiple aesthetic combinations. Not suitable for industrial laundering.

Can be bought as a suit and or separates.

Fit: Female Contemporary

Fabric: 95% polyester
5% spandex

DK625 Tunic Top: V-neck mock-wrap
2x hip pockets
1x pen insert pocket
ID loop

DK010 Trousers/
Pant Drawstring elasticated waist
Standard straight vented leg
2x hip pockets
2x rear pockets
2x cargo pockets
1x cargo insert pocket

Checkout our base-layers and underscrubs on the back page.





Personalise your uniform with our in-house embroidery service.

[Click here for garment sizing](#)

available sizes:

XS S M L XL 2XL 3XL

available colours (extra colours by request):

-  Navy
-  Pewter
-  Black
-  Caribbean
-  Wine



Model is wearing Caribbean

AWB were the first UK company to introduce Dickies scrubs to the UK on 2010. We are delighted to continue our partnership with this global partner brand.

Dickies EDS Essentials is a breathable moisture-wicking, 4-way stretch fabric, ensuring comfort and freedom of movement. Available in a range of colours enables tunic tops and trousers to be mixed and matched to create multiple aesthetic combinations. Not suitable for industrial laundering.

Can be bought as a suit and or separates.

Fit: Male Contemporary

Fabric: 95% polyester
5% spandex

DK645 Tunic Top: V-neck
2x hip pockets
1x pen insert pocket
1x chest pocket
1x scissor pocket
ID loop

DK015 Trousers/
Pant Drawstring elasticated
button waist with zip fly
Belt loops
Standard straight
2x hip pockets
2x rear pockets
2x cargo pockets

Checkout our base-layers and underscrubs on the back page.

Personalise your uniform with our in-house embroidery service.

[Click here for garment sizing](#)

available sizes:

- XS
- S
- M
- L
- XL
- 2XL
- 3XL

available colours (extra colours by request):

- Navy
- Pewter
- Black
- Caribbean
- Wine



Model is wearing Navy



BALANCE

DK870 top, DK135 pant

AWB were the first UK company to introduce Dickies scrubs to the UK on 2010. We are delighted to continue our partnership with this global partner brand.

Dickies EDS Balance is a soft, breathable, 2-way stretch fabric ensuring comfort and freedom of movement. Available in a range of colours enables tunic tops and trousers to be mixed and matched to create multiple aesthetic combinations. Not suitable for industrial laundering.

Can be bought as a suit and or separates.

Fit: Female Contemporary

Fabric: 77% polyester
20% rayon
3% spandex

DK870 Tunic Top: V-neck soft rib knit neck
2x hip pockets
Soft rib knit back panels
ID loop

DK135 Trousers/ Pant: Drawstring elasticated rib knit waist
Standard tapered leg
2x hip pockets
2x rear pockets
1x cargo pocket
1x zip cargo pocket
Utility loop

Checkout our base-layers and underscrubs on the back page.

Personalise your uniform with our in-house embroidery service.

[Click here for garment sizing](#)

available sizes:

- XS
- S
- M
- L
- XL
- 2XL
- 3XL

available colours (extra colours by request):

- Navy
- Pewter
- Black
- Royal Blue
- Wine



Model is wearing Royal Blue



BALANCE

DK845 top, DK220 pant

AWB
always-wear-better

AWB were the first UK company to introduce Dickies scrubs to the UK on 2010. We are delighted to continue our partnership with this global partner brand.

Dickies EDS Balance is a soft, breathable, 2-way stretch fabric ensuring comfort and freedom of movement. Available in a range of colours enables tunic tops and trousers to be mixed and matched to create multiple aesthetic combinations. Not suitable for industrial laundering.

Can be bought as a suit and or separates.

Fit: Male Contemporary

Fabric: 77% polyester
20% rayon
3% spandex

DK845 Tunic Top: V-neck soft rib knit neck
1x chest pocket
2x hip pockets
1x pen insert pocket
Soft rib knit side panels

DK220 Trousers/ Pant: Drawstring elasticated rib knit button waist with fly
Standard straight leg
2x hip pockets
1x zip hip insert pocket
2x rear pockets
1x cargo pocket
Utility loop

Checkout our base-layers and underscrubs on the back page.

Personalise your uniform with our in-house embroidery service.

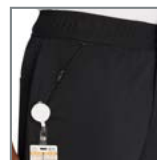
[Click here for garment sizing](#)

available sizes:

- XS S M L XL 2XL 3XL

available colours (extra colours by request):

- Navy
- Pewter
- Black
- Royal Blue
- Wine



Model is wearing Wine

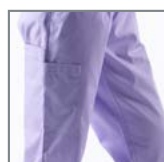
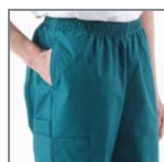
AWB were the first UK company to introduce Dickies scrubs to the UK on 2010. We are delighted to continue our partnership with this global partner brand.

Available in a range of colours enables tunic tops and trousers to be mixed and matched to create multiple aesthetic combinations. Suitable for industrial laundering. Can be bought as a suit and or separates.

Checkout our base-layers and underscrubs on the back page.

Personalise your uniform with our in-house embroidery service.

[Click here for garment sizing](#)



Fit: Female
Fabric: 65% polyester
35% brushed cotton

available sizes (subject to stock):
XS S M L XL 2XL 3XL

HC11601: Crossover V-neck
Tunic Top 2x hip pockets
1x inset pocket
Side vents
Tie back
Contrasting piping
1x pen pocket section

available colours [contrasting piping]:

 Navy [ciel blue]	 Wine [black]
 Black [pink]	 Iris [orchid]
 White [white]	 Orchid [iris]
 Royal Blue [black]	
 Turquoise [white]	
 Ciel [navy]	
 Hunter Green [black]	
 Shocking Pink [black]	

HC53102 Vented Bootcut Leg
Trousers/
Pant Elasticated waist
2x hip pockets
1x rear pocket
2x cargo pockets

Trousers are without piping
Colours are subject to stock

Model is wearing Navy.



MEDICAL

HC10506 top, HC50601 pant

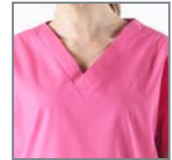
AWB were the first UK company to introduce Dickies scrubs to the UK on 2010. We are delighted to continue our partnership with this global partner brand.

Available in a range of colours enables tunic tops and trousers to be mixed and matched to create multiple aesthetic combinations. Suitable for industrial laundering. Can be bought as a suit and or separates.

Checkout our base-layers and underscrubs on the back page.

Personalise your uniform with our in-house embroidery service.

[Click here for garment sizing](#)



Fit: Unisex
Fabric: 65% polyester
35% brushed cotton

available sizes (subject to stock):

- XS S M L XL 2XL 3XL

available colours (subject to stock):

- Navy Wine
- Black Iris
- White Orchid
- Royal Blue
- Turquoise
- Ciel
- Hunter Green
- Shocking Pink

HC10506: V-neck
Tunic Top 2x hip pockets
Side vents

HC50601 Drawstring waist
Trousers/ 2x hip pockets
Pant 1x rear pocket
2x cargo pockets
Classic fit

Models are wearing Turquoise & Ciel

Galaxy is AWB's in-house premium range with high quality and durable 175 gsm fabric. A wide selection of colours provides a wide range of aesthetic options whilst retaining the industrial launderable performance. Many of our customers choose Galaxy as an alternative to Dickies EDS.

The range features hybrid waist trousers. The Galaxy range is suitable for industrial laundering (EN14065 & decontamination HTM-01-05).

Can be bought as a suit and or separates.

Fit: Unisex

Fabric: 65% polyester
35% cotton

Fabric weight: 175 gsm

Tunic Top: V-neck
2x hip pockets
Side vents

Trousers/Pant: 2x hip pockets
2x cargo pockets
1x inset cargo pocket
1x rear pocket
Elasticated draw-string waist
faux fly
Available in TALL and SHORT fits

Checkout our base-layers and underscrubs on the back page.

Personalise your uniform with our in-house embroidery service.

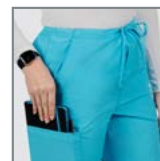
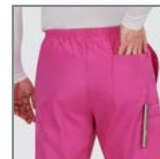
[Click here for garment sizing](#)

available sizes:

- XS
- S
- M
- L
- XL
- 2XL
- 3XL

available colours:

- Navy
- Wine
- Pewter
- Iris
- Black
- Orchid
- Royal Blue
- Turquoise
- Mid Blue/Ciel
- Hunter Green
- Light Grey
- Shocking Pink



Models are wearing Royal Blue.
Models are wearing under-scrubs.

Galaxy is AWB's in-house premium range with high quality and durable 175 gsm fabric. A wide selection of colours provides a wide range of aesthetic options whilst retaining the industrial launderable performance. Many of our customers choose Galaxy as an alternative to Dickies EDS.

The Galaxy range is suitable for industrial laundering (EN14065 & decontamination HTM-01-05).

The mock-wrap top can be worn with Galaxy scrub trousers.

- Fit: Female
- Fabric: 65% polyester
35% cotton
- Fabric weight: 175 gsm
- Tunic Top: Crossover V-neck
2x hip pockets
1x inset pocket
Side vents
Tie back
Contrasting piping
1x pen pocket section

Checkout our base-layers and underscrubs on the back page.

Personalise your uniform with our in-house embroidery service.

[Click here for garment sizing](#)

- available sizes:
- XS
 - S
 - M
 - L
 - XL
 - 2XL
 - 3XL

- available colours:[contrasting piping]:
- Navy [ciel blue]
 - Wine [black]
 - Pewter [light grey]
 - Iris [orchid]
 - Black [pewter]
 - Black [pink]
 - Royal Blue [black]
 - Orchid [iris]
 - Turquoise [white]
 - Ciel [navy]
 - Hunter Green [black]
 - Light Grey [pewter]
 - Shocking Pink [black]



Models is wearing Hunter Green.
Models is wearing under-scrubs.

Galaxy is AWB's in-house premium range. Our healthcare tunic is a durable fitted garment made from a hard wearing and durable polyester/cotton blend.

Available in a wide selection of colours with multiple pockets, the garment has industrial launderable performance (EN14065 & decontamination HTM-01-05).

Can be worn with 1st Choice, First Choice PRO, Galaxy scrub and Galaxy Super trousers.

Fit: Female

Fabric: 65% polyester
35% cotton

Fabric weight: 195-200 gsm

Tunic Top: Contrasting trim at neck and sleeves
Comfortable fit with double vents back for ease of movement
2x hip pockets
2x chest pockets (left pocket with waterproof lining)
Concealed pop-stud fastening with zip upper

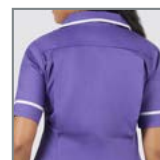
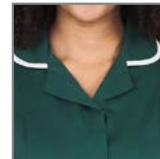
Checkout our base-layers and underscrubs on the back page.

Personalise your uniform with our in-house embroidery service.

[Click here for garment sizing](#)

- available sizes:
- | | | | | | | |
|----|----|----|----|----|----|----|
| 8 | 10 | 12 | 14 | 16 | 18 | 20 |
| 22 | 24 | 26 | 28 | 30 | 32 | |

- available colours:
- White
 - Mid Blue
 - Dark Royal Blue
 - Navy
 - Purple
 - Lilac
 - Bottle Green



Model is wearing Mid Blue.

Cherokee Originals is one of our most popular partner brands. Widely recognised across the industry as being lightweight, robust and easy care.

Available in a wide range of colours enables tunic tops and trousers to be mixed and matched across the range to create multiple aesthetic combinations.

Suitable for industrial laundering . Can be bought as a suit and or separates.

Checkout our base-layers and underscrubs on the back page.

Personalise your uniform with our in-house embroidery service.

[Click here for garment sizing](#)

Fit: Unisex

Fabric: 65% polyester
35% cotton

4700 Tunic Top: V-neck
Traditional fit
2x hip pockets
1x phone pocket
Side vents

4200 Trousers/
Pant Elasticated waist
Traditional fit
Tapered leg
2x cargo pockets
1x phone pocket
1x scissor pocket

available sizes: (extra sizes by request)

XS S M L XL 2XL 3XL

available colours: (extra colours by request)

- | | |
|--|---|
|  Navy |  Wine |
|  Pewter |  Grape |
|  Black |  Caribbean |
|  Royal Blue |  Shocking Pink |
|  Turquoise |  Teal |
|  Mid Blue/Ciel |  Red |
|  Hunter Green |  White |
|  Light Grey | |
|  Galaxy Blue | |
|  Surgical Green | |



Models are wearing Turquoise & Teal.

Cherokee Originals is one of our most popular partner brands. Widely recognised across the industry as being lightweight, robust and easy care.

Available in a wide range of colours enables tunic tops and trousers to be mixed and matched across the range to create multiple aesthetic combinations.

Suitable for industrial laundering. Can be bought as a suit and or separates.

Checkout our base-layers and underscrubs on the back page.

Personalise your uniform with our in-house embroidery service.

[Click here for garment sizing](#)

Fit: Unisex

Fabric: 65% polyester
35% cotton

4876 Tunic Top:
[Colours in blue text only.](#)
V-neck
Traditional fit
1x chest pocket
2x hip pockets
1x phone pocket
Side vents

4100 Trousers/
Pant
Drawstring waist
Traditional fit
Straight leg
2x cargo pockets
1x phone pocket
1x scissor pocket

available sizes: (extra sizes by request)

XS S M L XL 2XL 3XL

available colours: (extra colours by request)

- | | |
|--|---|
|  Navy |  Wine |
|  Pewter |  Grape |
|  Black |  Caribbean |
|  Royal Blue |  Shocking Pink |
|  Turquoise |  Teal |
|  Mid Blue/Ciel |  Red |
|  Hunter Green |  White |
|  Light Grey | |
|  Galaxy Blue | |
|  Surgical Green | |



Models are wearing Pewter & Wine.

Cherokee is one of our most popular partner brands. Widely recognised across the industry as being lightweight, robust and easy care.

With 2 way-stretch soft fabric, the Cherokee Revolution Maternity top and trousers will give you freedom of movement as you grow with your baby.

Suitable for industrial laundering. Can be bought as a suit and or separates.

Checkout our base-layers and underscrubs on the back page.

Personalise your uniform with our in-house embroidery service.

[Click here for garment sizing](#)

Fit: Female Maternity

Fabric: 78% polyester
20% rayon
2% spandex

688 Tunic Top: Mock wrap v neck
2-way stretch fabric
2x hip pockets
Zip side vents and stretch panels which grow with you and your baby.

155 Trousers/
Pant: Elasticated waist
Stretch waist panel
Straight leg
2x cargo pockets
1x zip cargo pocket
2x ID loops

available sizes: (extra sizes by request)

XS S M L XL 2XL 3XL

available colours: (extra colours by request)

- Navy
- Pewter
- Black
- Mid Blue/Ciel
- Hunter Green



Model is wearing Navy.

First Choice PRO retains the industrial laundering performance of our 1st Choice brand, but offers enhanced functionality and affordability. Many of our customers choose First Choice PRO as an alternative to Cherokee.

The range draws upon the sizing and fit of our Galaxy range including the hybrid waist of the trousers. The First Choice PRO is suitable for industrial laundering (EN14065 & decontamination HTM-01-05).

Can be bought as a suit and or separates.

- Fit: Unisex
- Fabric: 65% polyester
35% cotton
- Fabric weight: 145 gsm
- Tunic Top: V-neck
2x hip pockets
Side vents
Colour coded label in neck
- Trousers/Pant: 1x rear pocket
1x cargo pocket
Elasticated draw-string waist
Available in TALL and SHORT fits
Colour coded label

Checkout our base-layers and underscrubs on the back page.

Personalise your uniform with our in-house embroidery service.

[Click here for garment sizing](#)

available sizes & trim key:



available colours:

- Navy
- Pewter
- Black
- Royal Blue
- Eggplant



Models are wearing Pewter.
Models are wearing under-scrubs.

1st Choice are AWB's own-brand entry level range of garments and have been the cornerstone of our business since founding.

Tried and tested, our 1st Choice scrub's design has evolved over 75 years to deliver a robust and flexible product able to cope with the rigours of modern healthcare practice and industrial laundering (EN14065 & decontamination HTM-01-05).

Suits are fully reversible (that's why there are pockets on the inside too.)

Can be bought as a suit and or separates.

Fit: Unisex

Fabric: 65% polyester
35% cotton

Fabric weight: 130 gsm min

Tunic Top: V-neck
Fully reversible
1x hip pocket inside & out
Coloured sizing trim around neck

Trousers/Pant: Fully reversible
1x rear pocket inside and out
Coloured drawstring for sizing

Checkout our base-layers and underscrubs on the back page.

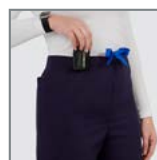
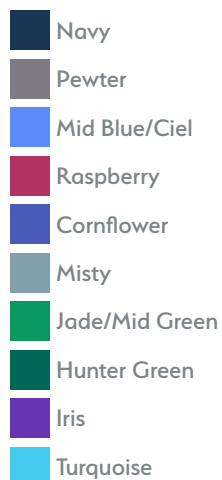
Personalise your uniform with our in-house embroidery service.

[Click here for garment sizing](#)

available sizes & trim key:



available colours:



Models are wearing Navy.
Models are wearing under-scrubs.

1st Choice are AWB's own-brand entry level range of garments and have been the cornerstone of our business since founding.

Our warm-up jackets offer an extra layer of warmth when moving between theatre and ward, or for nipping out to your favourite coffee shop mid shift. The 1st Choice warm-up jacket is suitable for industrial laundering (EN14065 & decontamination HTM-01-05).

Can be worn with 1st Choice, First Choice PRO and Galaxy scrubs.

Checkout our base-layers and underscrubs on the back page.

Personalise your uniform with our in-house embroidery service.

[Click here for garment sizing](#)

- Fit: Unisex
- Fabric: 65% polyester
35% cotton
- Fabric weight: 130 gsm min
- Jacket: Crew neck
Pop-stud fastening
Rib knit elasticated cuffs
2x hip pockets
Coloured sizing trim around neck

available sizes & trim key:

S	M	L	XL	2XL	3XL

available colours:

- Navy
- Mid Green
- Mid Blue/Ciel



Models are wearing Navy.
Models are wearing under-scrubs.

1st Choice are AWB's own-brand entry level range of garments and have been the cornerstone of our business since founding.

Our Blue Diamond Print Patient Gown, is 46" long and generously cut for extra comfort. Also featuring ties at the back and an overlapping modesty panel.

The 1st Choice Patient Gown is suitable for industrial laundering (EN14065 & decontamination HTM-01-05).

Fit: Unisex

Fabric: 65% polyester
35% cotton

Fabric weight: 145 gsm min

Gown: Full length gown
Wrap around design
Large overlap for modesty
2x neck/shoulder ties
2x waist ties

available sizes:
Standard size
Bariatric size

available colours:

-  Blue Diamond/White trim (Standard)
-  Green Diamond/Green Trim (Bariatric)

Personalise your uniform with our in-house embroidery service.

[Click here for garment sizing](#)



1st Choice are AWB's own-brand entry level range of garments and have been the cornerstone of our business since founding.

Our Blue Diamond Print Patient Robe, is generously cut for extra comfort. Patient dignity is important and this garment is designed for maximum modesty and made from a comfortable 65/35 Poly/Cotton.

The 1st Choice Patient Robe is suitable for industrial laundering (EN14065 & decontamination HTM-01-05).

Fit: Unisex

Fabric: 65% polyester
35% cotton


Fabric weight: 145 gsm min

Gown: Mid length robe
Wrap around design
Large overlap for modesty
1x waist tie

Personalise your uniform with our in-house embroidery service.

[Click here for garment sizing](#)

available sizes & trim key:
Single size

available colours:
 Blue Diamond Swatch



Garment sizing



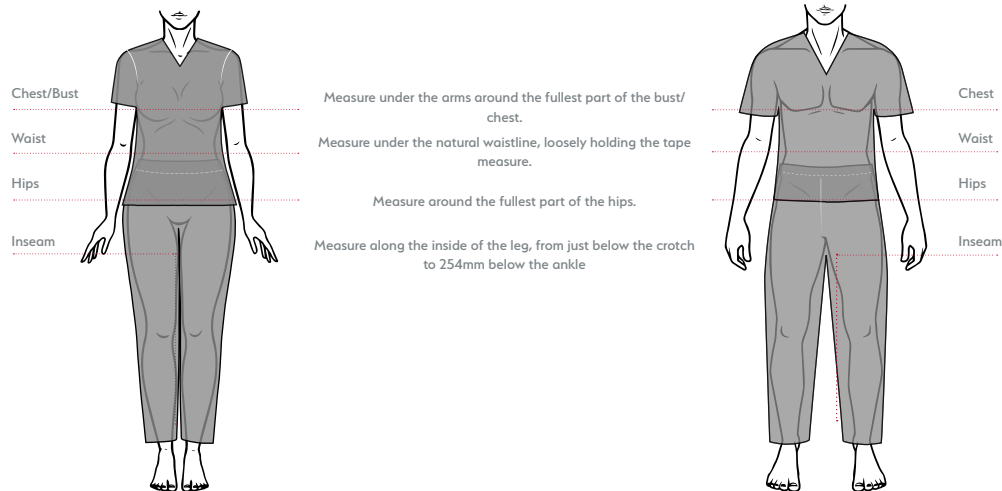
If one of your measurements is between two sizes, order the smaller size for a tighter fit or the larger size for a looser fit. If your measurements for hips and waist correspond to two different suggested sizes, order the one indicated by your hip measurement.

HH Works

	X Small	Small	Medium	Large	X Large	2X Large	Tol. +/-
A. Chest	815 - 858	864 - 889	914 - 940	965 - 1016	1014 - 1092	1194 - 1247	15
B. Waist	610 - 686	660 - 686	711 - 762	787 - 838	864 - 914	991 - 1041	15
C. Hips	914 - 940	914 - 940	965 - 1016	1041 - 1092	1118 - 1168	1245 - 1295	15
Trousers/Pant: In-seam: Regular 787, Short 737, Tall 838 All dimensions are in millimetres							

Purple Label & 360

	X Small	Small	Medium	Large	X Large	2X Large	Tol. +/-
A. Chest	762 - 858	858 - 889	889 - 940	940 - 1016	1016 - 1092	1092 - 1194	15
B. Waist	610 - 660	660 - 711	711 - 762	762 - 838	838 - 914	914 - 1016	15
C. Hips	864 - 914	914 - 965	965 - 1016	1016 - 1092	1092 - 1168	1168 - 1270	15
Trousers/Pant: In-seam: Regular 787, Short 737, Tall 838 All dimensions are in millimetres							

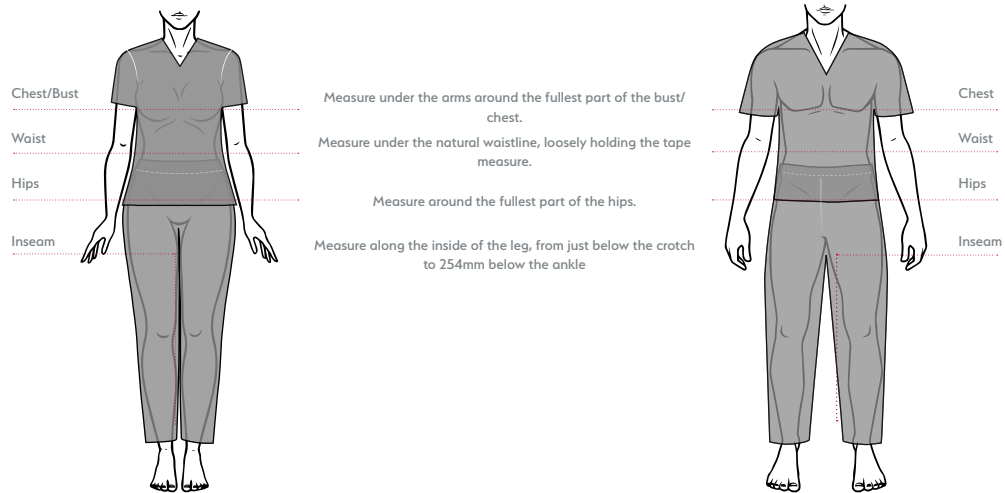


Model is wearing Navy

If one of your measurements is between two sizes, order the smaller size for a tighter fit or the larger size for a looser fit. If your measurements for hips and waist correspond to two different suggested sizes, order the one indicated by your hip measurement.

Women's Fit

	X Small	Small	Medium	Large	X Large	2X Large	3X Large	Tol. +/-
A. Chest	859 - 864	889 - 914	940 - 991	1016 - 1092	1118 - 1194	1219 - 1295	1321 - 1397	15
B. Waist	655 - 660	686 - 711	737 - 787	815 - 889	914 - 991	1016 - 1092	1118 - 1194	15
C. Hips	889 - 914	940 - 965	991 - 1041	1067 - 1143	1168 - 1245	1270 - 1346	1372 - 1448	15
Trousers/Pant: In-seam: Regular 775								
All dimensions are in millimetres								

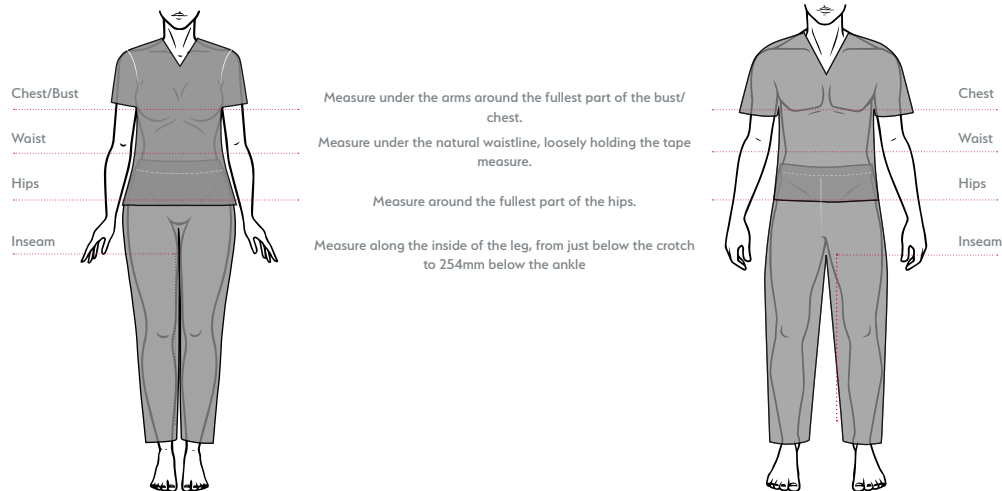


Model is wearing Eggplant.

If one of your measurements is between two sizes, order the smaller size for a tighter fit or the larger size for a looser fit. If your measurements for hips and waist correspond to two different suggested sizes, order the one indicated by your hip measurement.

HH Works, Purple Label & 360

	X Small	Small	Medium	Large	X Large	2X Large	Tol. +/-
A. Chest	813 - 864	914 - 940	965 - 1016	1067 - 1118	1168 - 1219	1270 - 1422	15
B. Waist	686 - 711	737 - 867	813 - 864	889 - 965	991 - 1067	1092 - 1168	15
C. Hips	813 - 864	889 - 940	965 - 1016	1041 - 1118	1143 - 1219	1247 - 1321	15
Trousers/Pant: In-seam: Regular 813, Short 749, Tall 889							
All dimensions are in millimetres							



Model is wearing Navy.

If one of your measurements is between two sizes, order the smaller size for a tighter fit or the larger size for a looser fit. If your measurements for hips and waist correspond to two different suggested sizes, order the one indicated by your hip measurement.

Female

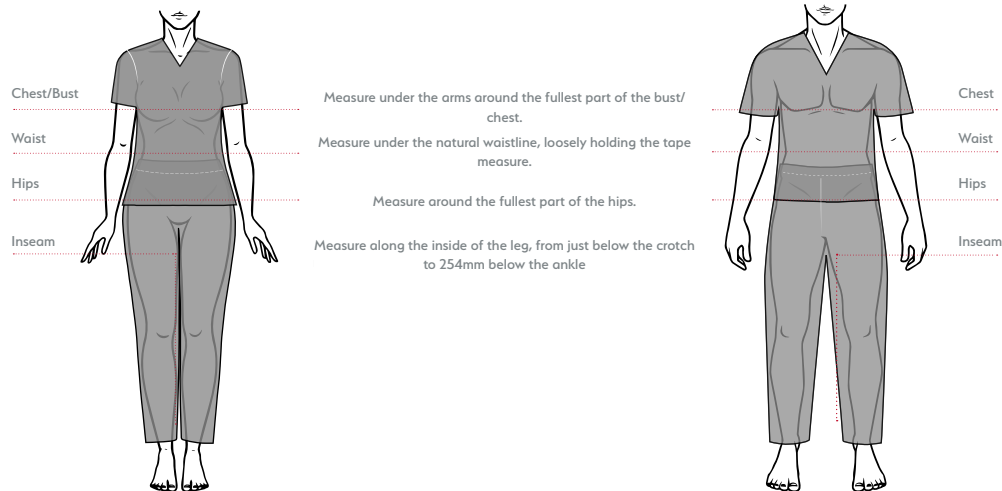
	X Small	Small	Medium	Large	X Large	2X Large	Tol. +/-
A. Chest	840 - 860	890 - 910	940 - 990	1020 - 1070	1090 - 1140	1170 - 1220	15
B. Waist	650 - 670	700 - 720	750 - 800	830 - 880	900 - 950	990 - 1040	15
C. Hips	910 - 940	970 - 990	1020 - 1070	1090 - 1140	1170 - 1220	1240 - 1290	15

All dimensions are in millimetres

Unisex

	X Small	Small	Medium	Large	X Large	2X Large	Tol. +/-
A. Chest	840 - 890	910 - 970	990 - 1040	1090 - 1140	1190 - 1240	1290 - 1350	15
B. Waist	670 - 720	750 - 800	830 - 880	930 - 980	1030 - 1080	1130 - 1180	15

All dimensions are in millimetres



Model is wearing Turquoise.



sizing

If one of your measurements is between two sizes, order the smaller size for a tighter fit or the larger size for a looser fit. If your measurements for hips and waist correspond to two different suggested sizes, order the one indicated by your hip measurement.

Modern Classic / Contemporary Fit

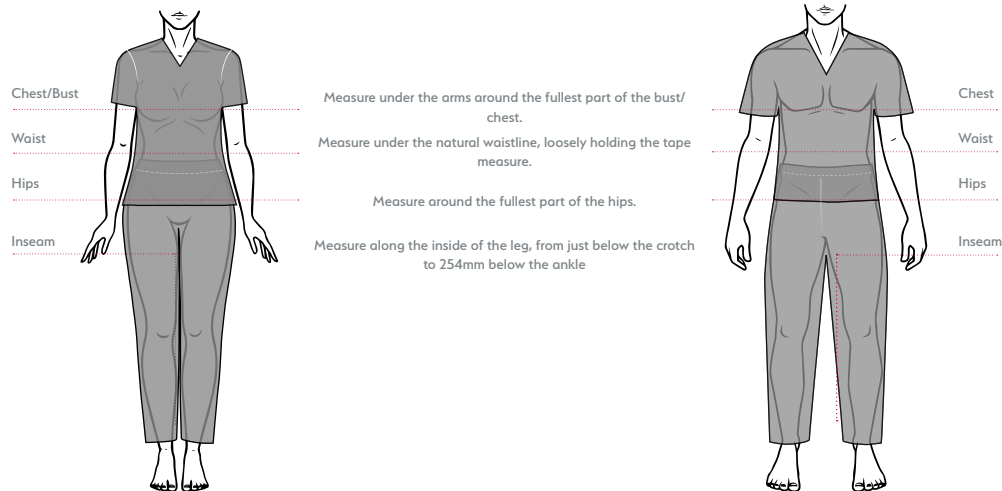
	X Small	Small	Medium	Large	X Large	2X Large	3X Large	Tol. +/-
A. Chest	840 - 865	890 - 940	965 - 1015	1040 - 1120	1145 - 1220	1245 - 1320	1345 - 1420	15
B. Waist	635 - 660	685 - 735	760 - 815	840 - 915	940 - 1015	1040 - 1120	1140 - 1220	15
C. Hips	865 - 890	815 - 865	990 - 1040	1065 - 1145	1117 - 1245	1270 - 1345	1370 - 1450	15

Trousers/Pant: In-seam: Regular 787, Short 724, Tall 864
All dimensions are in millimetres

Unisex Fit

	X Small	Small	Medium	Large	X Large	2X Large	3X Large	Tol. +/-
A. Chest	840 - 865	890 - 930	940 - 1000	1015 - 1090	1120 - 1195	1230 - 1295	1320 - 1400	15
B. Waist	635 - 670	685 - 720	735 - 800	810 - 890	915 - 1000	1015 - 1090	1120 - 1205	15
C. Hips	890 - 930	940 - 970	990 - 1055	1065 - 1155	1170 - 1245	1270 - 1360	1370 - 1460	15

Trousers/Pant: In-seam: Regular 778, Short 711, Tall 851
All dimensions are in millimetres



Model is wearing Eggplant.





BALANCE

sizing

MEDICAL

AWB
always-wear-better

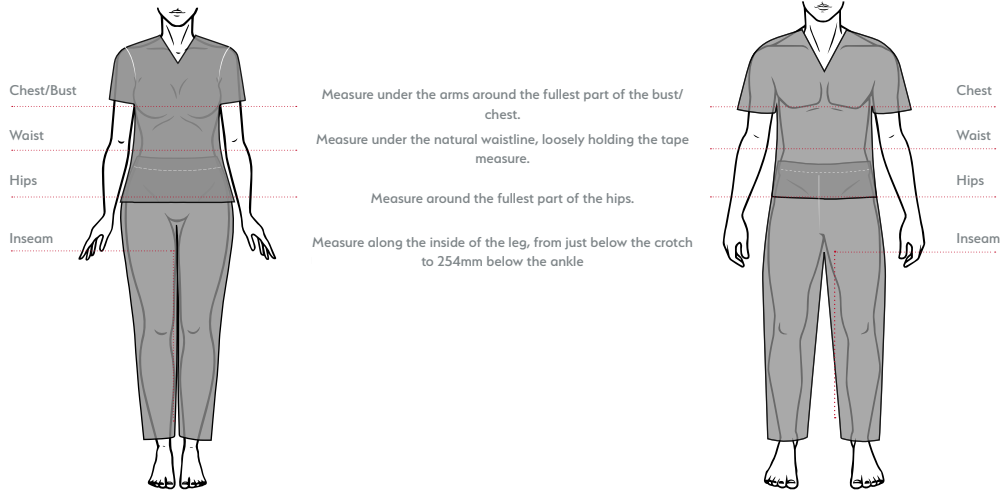
If one of your measurements is between two sizes, order the smaller size for a tighter fit or the larger size for a looser fit. If your measurements for hips and waist correspond to two different suggested sizes, order the one indicated by your hip measurement.

Female Fit

	X Small	Small	Medium	Large	X Large	2X Large	3X Large	Tol. +/-
A. Chest	838 - 864 [33 - 34]	889 - 914 [35 - 36]	940 - 991 [37 - 39]	1016 - 1092 [40 - 43]	1118 - 1194 [44 - 47]	1219 - 1295 [48 - 51]	1321 - 1397 [52 - 55]	15 [0.5]
B. Waist	635 - 660 [25 - 26]	686 - 711 [27 - 28]	737 - 787 [29 - 31]	813 - 889 [32 - 35]	914 - 991 [36 - 39]	1016 - 1092 [40 - 43]	1118 - 1194 [44 - 47]	15 [0.5]
C. Hips	889 - 914 [35 - 36]	940 - 965 [37 - 38]	991 - 1041 [39 - 41]	1067 - 1143 [42 - 45]	1168 - 1245 [46 - 49]	1270 - 1346 [50 - 53]	1372 - 1449 [54 - 57]	15 [0.5]
Trousers/Pant: In-seam: Regular 762 - 787 [30 - 31], Short 699 - 724 [27.5 - 28.5], Tall 838 - 864 [33 - 34]								
All dimensions are in millimetres [inches in brackets]								

Male Fit

	X Small	Small	Medium	Large	X Large	2X Large	3X Large	Tol. +/-
A. Chest	840 - 890 [33 - 35]	915 - 965 [36 - 38]	990 - 1040 [39 - 41]	1070 - 1145 [42 - 45]	1170 - 1250 [46 - 49]	1270 - 1345 [50 - 53]	1370 - 1450 [54 - 57]	15 [0.5]
B. Waist	610 - 660 [24 - 26]	685 - 735 [27 - 29]	760 - 815 [30 - 32]	840 - 915 [33 - 36]	940 - 1015 [37 - 40]	1040 - 1120 [41 - 44]	1145 - 1220 [45 - 48]	15 [0.5]
C. Hips	840 - 890 [33 - 35]	915 - 965 [36 - 38]	990 - 1040 [39 - 41]	1070 - 1145 [42 - 45]	1170 - 1250 [46 - 49]	1270 - 1345 [50 - 53]	1370 - 1450 [54 - 57]	15 [0.5]
Trousers/Pant: In-seam: Regular 810 [32]								
All dimensions are in millimetres [inches in brackets]								

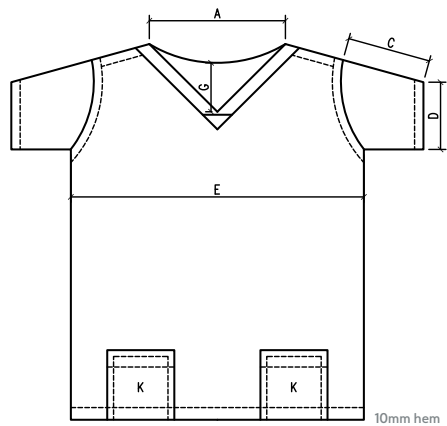


Model is wearing Wine.

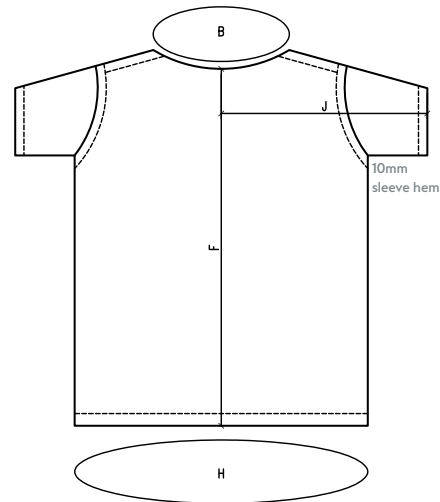
Tunic Top - please note garment is generously sized for ease of movement

	X Small	Small	Medium	Large	X Large	2X Large	3X Large	Tol. +/-
A. Neck Width	178	184	190	196	202	208	214	5
B. Neck Opening	480	490	500	510	520	530	240	25
C. Sleeve Length	170	180	190	200	210	220	230	10
D. Sleeve Opening	180	190	200	210	220	230	240	10
E. Chest	525	555	585	615	645	685	715	25
F. Back Length	690	710	730	750	770	790	810	20
G. Front Neck drop from Collar back	140	145	150	155	160	165	170	5
H. Sweep	1020	1020	1180	1240	1290	1380	1420	25
J. O/A Sleeve length	480	500	520	540	560	580	600	5
K. Lower Pocket Size (LxW)	200 x 190	200 x 190	200 x 190	220 x 210	220 x 210	220 x 210	220 x 210	
Neck stamp colour Colour	N/A	N/A	N/A	N/A	N/A	N/A	N/A	

Front



Back



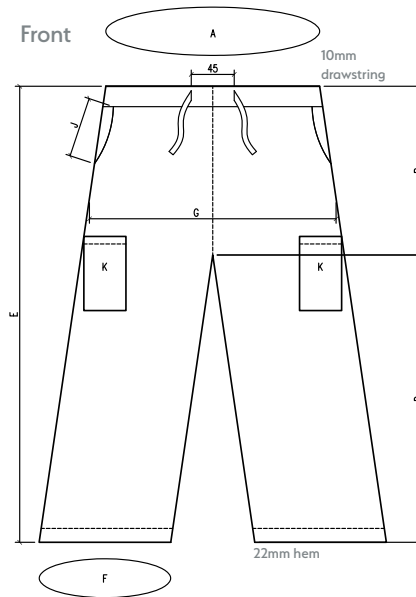
All dimensions in millimetres. Drawing not to scale.
Dimensions are approximate

Trousers - please note garment is generously sized for ease of movement

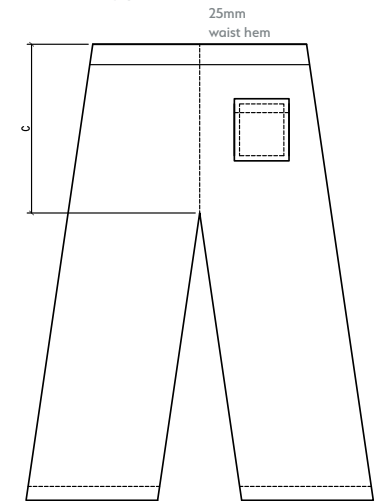
TALL Trousers INSEAM (D) = 850 SHORT Trousers INSEAM (D) = 700

	X Small	Small	Medium	Large	X Large	2X Large	3X Large	Tol. +/-
A. Waist Relaxed (Extended)	390 (470)	420 (500)	450 (530)	480 (560)	510 (590)	540 (620)	570 (650)	25 (25)
B. Front Rise	290	300	310	320	330	340	350	15
C. Back Rise	390	403	416	429	442	455	468	15
D. Inseam	790	790	790	790	790	790	790	10
E. Side Length	1075	1075	1075	1075	1075	1075	1075	25
F. Leg Opening	420	440	460	480	500	520	540	25
G. Hips 203mm (8") below waist	510	540	570	600	630	660	690	25
H. Pocket Size	145 x 145	145 x 145	145 x 145	145 x 145	145 x 145	145 x 145	145 x 145	
J. Hip Pocket Opening	175	175	175	180	180	180	180	10
K. Cargo Pocket Size (LxW)	200 x 200	200 x 200	200 x 200	200 x 200	210 x 210	210 x 210	210 x 210	210 x 210
Twill Tape Colour	As garment	As garment	As garment	As garment	As garment	As garment	As garment	

Front



Back



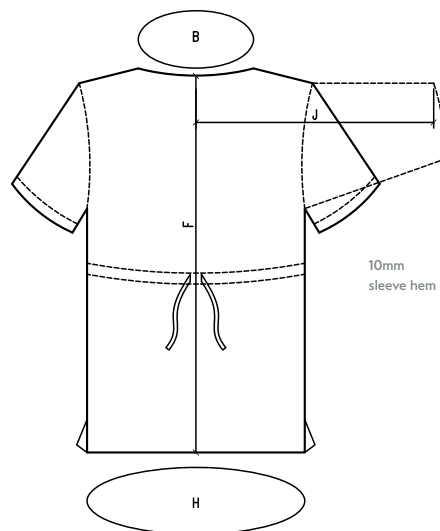
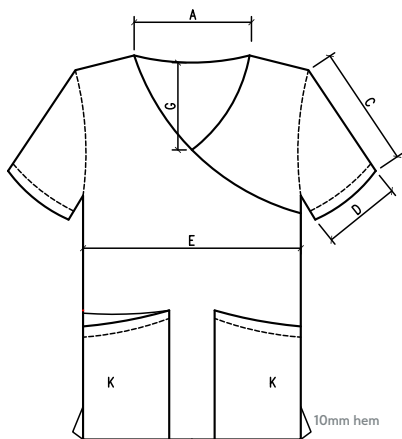
All dimensions in millimetres. Drawing not to scale.
Dimensions are approximate

GALAXY Galaxy Mock-wrap top sizing

	X Small	Small	Medium	Large	X Large	2X Large	3X Large	Tol. +/-
A. Neck Width	175	180	185	190	195	200	205	5
B. Not Used	480	490	500	510	520	530	540	25
C. Sleeve Length	390	405	420	445	470	495	520	5
D. Sleeve Opening	170	180	190	200	210	220	230	10
E. Chest	510	535	560	595	630	665	700	25
F. Back Length	690	710	730	750	770	790	810	20
G. Front Neck drop from Collar back	165	170	175	180	185	190	195	10
H. Sweep	1080	1140	1180	1260	1340	1390	1480	25
J. O/A Sleeve length	390	405	420	445	470	495	520	5
K. Lower Pocket Size (LxW)	175 x 210	175 x 210	175 x 210	185 x 220	185 x 220	185 x 220	185 x 220	
Neck stamp colour	N/A	N/A	N/A	N/A	N/A	N/A	N/A	
Colour	N/A	N/A	N/A	N/A	N/A	N/A	N/A	

Front

Back



All dimensions in millimetres. Drawing not to scale.
Dimensions are approximate

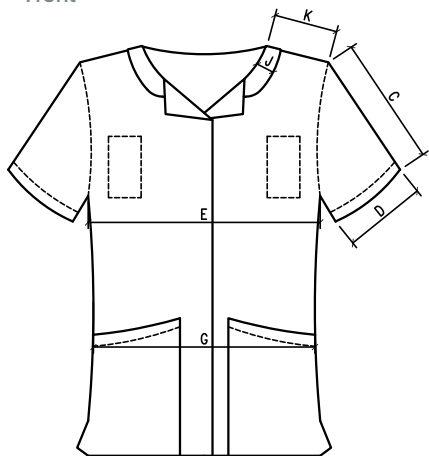


Model is wearing
Shocking Pink.
Model is wearing
under-scrubs.

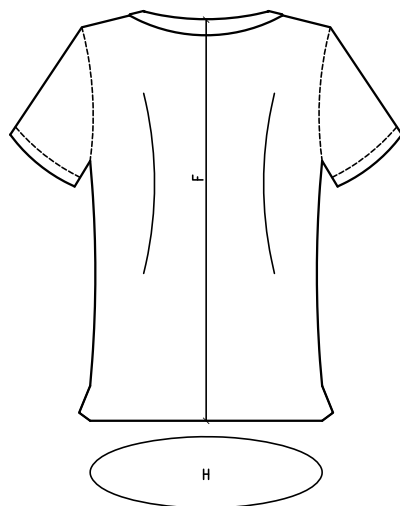
GALAXY Galaxy Healthcare tunic sizing

	8	10	12	14	16	18	20	22	24	26	28	30	32	Tol +/-
A. Not Used	N/A	N/A	N/A	N/A	N/A	N/A	N/A	N/A	N/A	N/A	N/A	N/A	N/A	N/A
B. Not Used	N/A	N/A	N/A	N/A	N/A	N/A	N/A	N/A	N/A	N/A	N/A	N/A	N/A	N/A
C. Sleeve Length	252	256	260	264	268	272	276	280	284	288	292	296	300	5
D. Sleeve Opening	152	161	170	179	188	198.5	209.0	221.5	234.0	246.5	259.0	271.5	284.0	5
E. Chest	450	470	490	510	535	565	595	625	655	685	715	745	775	10
F. Back Length	750	755	760	765	770	775	780	785	790	795	800	805	810	10
G. Waist	475	423	448	467	493	523	553	583	613	643	673	703	734	10
H. Sweep	950	1030	1070	1110	1160	1220	1280	1340	1400	1460	1520	1580	1640	10
J. Collar Depth	82	82	82	82	82	82	82	82	82	82	82	82	82	82
K. Shoulder	134	137	140	143	146	149	152	155	158	161	164	167	170	5

Front



Back



All dimensions in millimetres. Drawing not to scale.
Dimensions are approximate



Model is wearing
Bottle
Green.

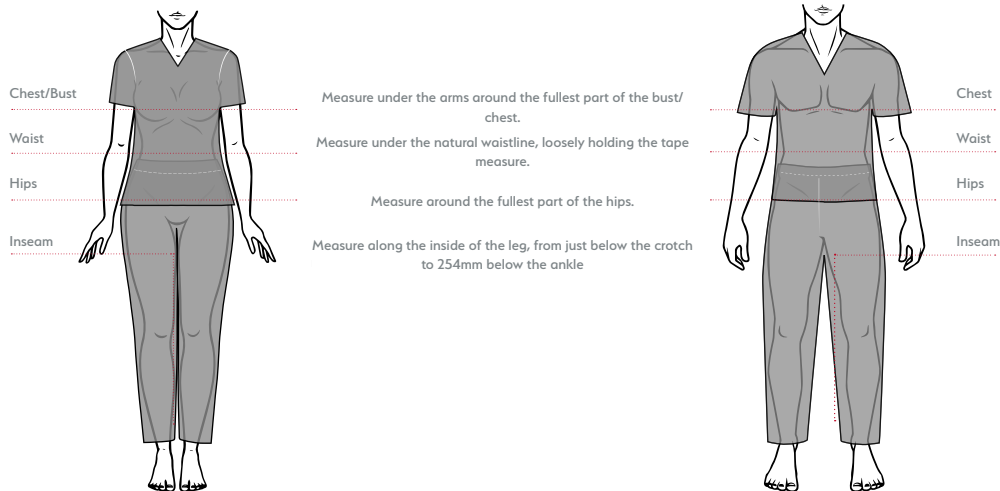
If one of your measurements is between two sizes, order the smaller size for a tighter fit or the larger size for a looser fit. If your measurements for hips and waist correspond to two different suggested sizes, order the one indicated by your hip measurement.

Unisex Traditional Fit

	X Small	Small	Medium	Large	X Large	2X Large	3X Large	Tol. +/-
A. Chest/Bust	889 - 940	965 - 1016	1041 - 1092	1118 - 1194	1219 - 1295	1321 - 1397	1422 - 1499	15
B. Waist	711 - 762	787 - 838	864 - 914	940 - 1016	1041 - 118	1143 - 1219	1245 - 1321	15
C. Hips	889 - 940	965 - 1016	1041 - 1092	1118 - 1194	1219 - 1295	1321 - 1397	1422 - 1499	15
Trousers/Pant: In-seam: Regular 787 - 813, Short 737 - 762, Tall 864 - 889								
All dimensions are in millimetres								

Female Traditional/Maternity Fit

	X Small	Small	Medium	Large	X Large	2X Large	3X Large	Tol. +/-
A. Chest	889 - 940	965 - 991	1016 - 1067	1092 - 1143	1168 - 1219	1245 - 1321	1346 - 1422	15
B. Waist	686 - 711	737 - 762	787 - 838	864 - 914	940 - 991	1016 - 1092	1118 - 1194	15
C. Hips	889 - 940	965 - 991	1016 - 1067	1092 - 1143	1168 - 1219	1245 - 1321	1346 - 1422	15
Trousers/Pant: In-seam: Regular 762 - 787, Short 699 - 724, Tall 838 - 864								
All dimensions are in millimetres								

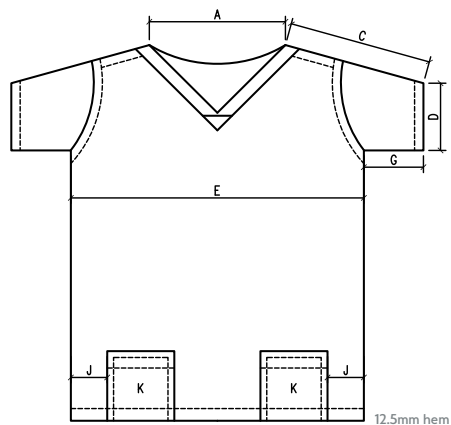


Model is wearing Pewter.

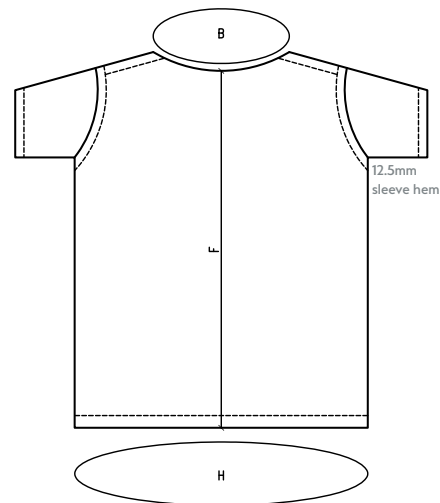
Tunic Top - please note garment is generously sized for ease of movement

	X Small	Small	Medium	Large	X Large	2X Large	3X Large	Tol. +/-
A. Neck Width	165	184	184	191	197	197	197	13
B. Neck Opening	559	584	584	635	635	648	648	13
C. Sleeve Length	305	330	368	381	394	406	432	13
D. Sleeve Opening	432	457	457	483	483	508	508	13
E. Chest	1016	1118	1219	1320	1422	1473	1575	25
F. Back Length	686	686	724	724	724	762	813	13
G. Sleeve Inseam	152	152	152	159	159	159	159	13
H. Sweep	1067	1105	1194	1321	1448	1511	1562	13
J. Lower Pocket Location	95	95	95	95	95	95	95	
K. Lower Pocket Size (LxW)	171 x 152	171 x 152	171 x 152	171 x 152	178 x 159	178 x 159	197 x 159	
Neck stamp colour Colour	Blue	Yellow	Brown	White	Pink	Orange	Red	

Front



Back



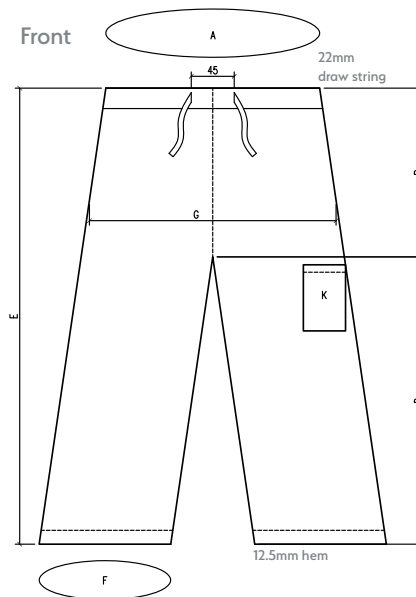
All dimensions in millimetres. Drawing not to scale. Dimensions are approximate

Trousers - please note garment is generously sized for ease of movement

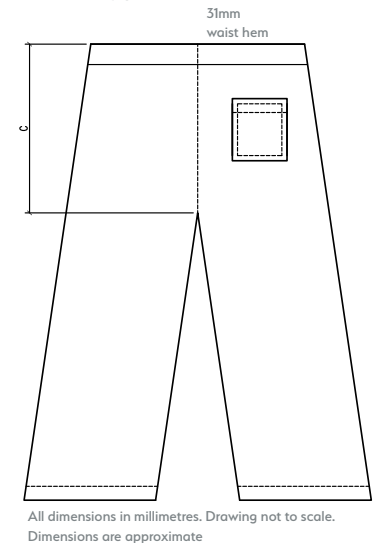
TALL Trousers INSEAM (D) = 850 SHORT Trousers INSEAM (D) = 700

	X Small	Small	Medium	Large	X Large	2X Large	3X Large	Tol. +/-
A. Waist	940	1016	1092	1168	1245	1321	1422	25
B. Front Rise	368	381	400	400	406	406	422	25
C. Back Rise	394	406	406	419	419	432	445	13
D. Inseam	711	711	724	737	737	762	813	13
E. Side Length	1067	1067	1105	1105	1118	1143	1168	13
F. Leg Opening	432	457	470	489	521	552	584	25
G. Hips 203mm (8") below waist	483	546	565	610	648	724	762	25
H. Pocket Size	165 x 178	165 x 178	165 x 178	165 x 178	165 x 178	165 x 178	165 x 178	25
J. Tie Length	1524	1600	1676	1753	1930	2083	2235	
K. Cargo Pocket Size	188 x 200	188 x 200	188 x 200	188 x 200	188 x 200	188 x 200	188 x 200	
Drawstring Colour	As garment	As garment	As garment	As garment	As garment	As garment	As garment	

Front



Back

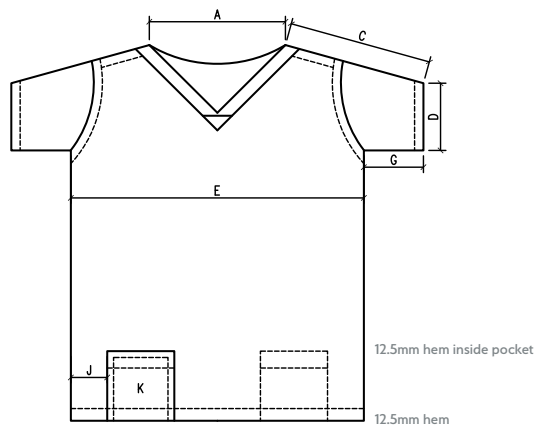


All dimensions in millimetres. Drawing not to scale. Dimensions are approximate

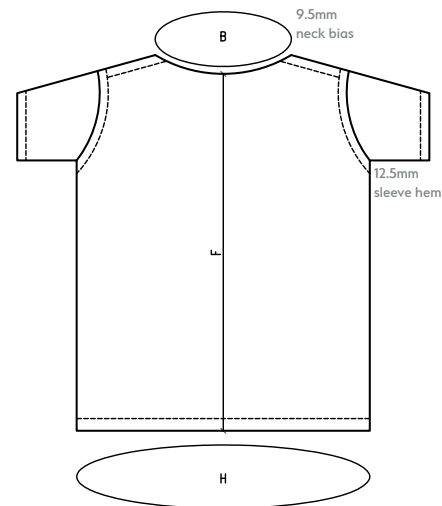
Please note garment is generously sized for ease of movement

	X Small	Small	Medium	Large	X Large	2X Large	3X Large	Tol. +/-
A. Neck Width	165	184	184	191	197	197	197	13
B. Neck Opening	559	584	584	635	635	648	648	13
C. Sleeve Length	305	330	368	381	394	406	432	13
D. Sleeve Opening	432	457	457	483	483	508	508	13
E. Chest	1016	1118	1219	1320	1422	1473	1575	25
F. Back Length	686	686	724	724	724	762	813	13
G. Sleeve Inseam	152	152	152	159	159	159	159	13
H. Sweep	1067	1105	1194	1321	1448	1511	1562	13
J. Lower Pocket Location	95	95	95	95	95	95	95	
K. Lower Pocket Size (LxW)	171 x 152	171 x 152	171 x 152	171 x 152	178 x 159	178 x 159	197 x 159	
Twill Tape Colour	Blue	Yellow	Brown	White	Pink	Orange	Red	

Front



Back



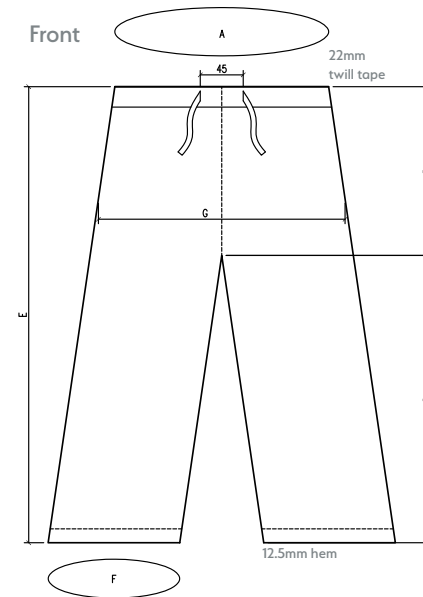
All dimensions in millimetres. Drawing not to scale. Dimensions are approximate

Please note garment is generously sized for ease of movement

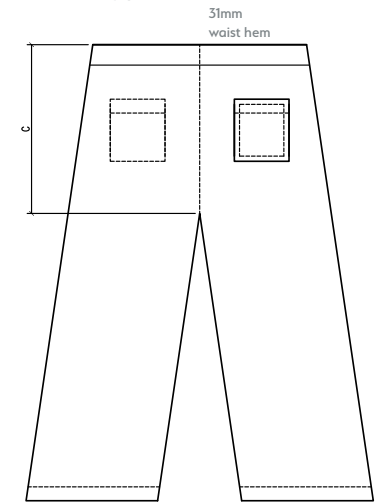
SHORT Trousers INSEAM (D) = 700

	X Small	Small	Medium	Large	X Large	2X Large	3X Large	Tol. +/-
A. Waist	940	1016	1092	1168	1245	1321	1422	25
B. Front Rise	368	381	400	400	406	406	422	25
C. Back Rise	394	406	406	419	419	432	445	13
D. Inseam	711	711	724	737	737	762	813	13
E. Side Length	1067	1067	1105	1105	1118	1143	1168	13
F. Leg Opening	432	457	470	489	521	552	584	25
G. Hips 203mm (8") below waist	483	546	565	610	648	724	762	25
H. Pocket Size	165 x 178	165 x 178	165 x 178	165 x 178	165 x 178	165 x 178	165 x 178	25
J. Tie Length	1524	1600	1676	1753	1930	2083	2235	
Twill Tape Colour	Blue	Yellow	Brown	White	Pink	Orange	Red	

Front



Back



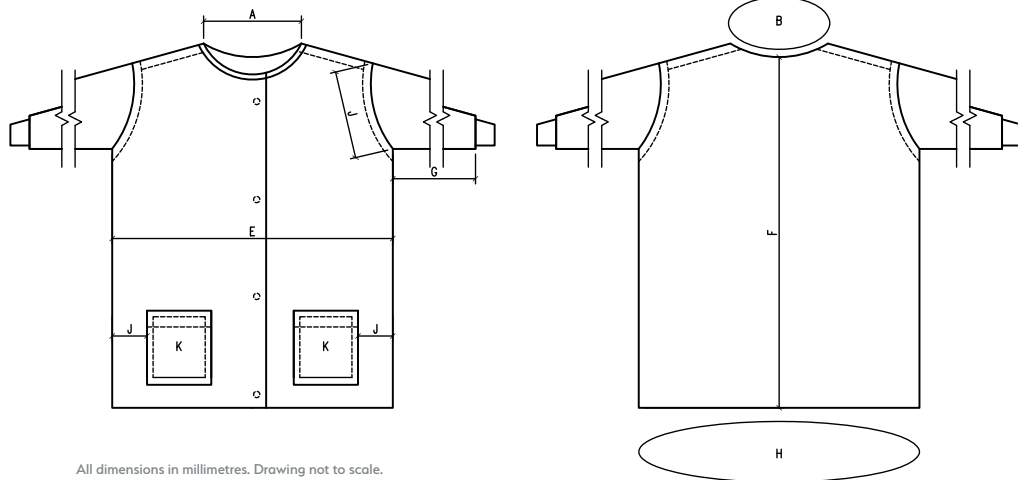
All dimensions in millimetres. Drawing not to scale. Dimensions are approximate

Please note garment is generously sized for ease of movement

	Small	Medium	Large	X Large	2X Large	3X Large	Tol. +/-
A. Neck Width	140	140	146	146	156	220	15
B. Neck Opening	395	420	430	445	445	585	25
C. Not used	N/A	N/A	N/A	N/A	N/A	N/A	N/A
D. Not used	N/A	N/A <td N/A	N/A	N/A	N/A	N/A	N/A
E. Chest	584	622	648	718	770	845	25
F. Back Length	794	800	800	800	800	830	25
G. Sleeve Inseam	483	483	495	510	510	510	25
H. Sweep	1270	1359	1397	1537	1660	1770	25
J. Sleeve Opening	279	286	292	292	310	335	25
K. Lower Pocket Size (LxW)	180 x 170	180 x 170	180 x 170	180 x 170	180 x 170	180 x 170	
Twill Tape Colour	Yellow	Brown	White	Pink	Orange	Red	

Front

Back



All dimensions in millimetres. Drawing not to scale. Dimensions are approximate

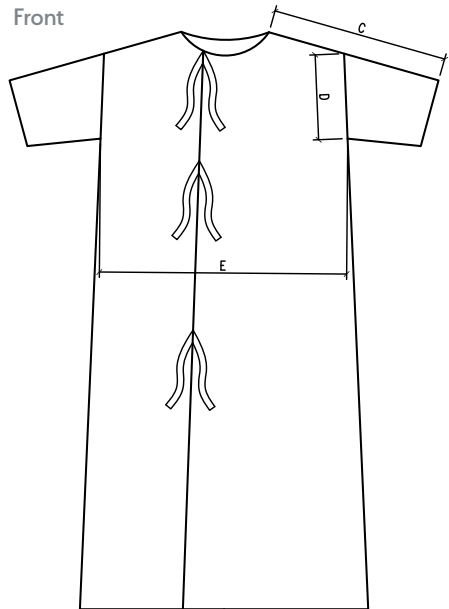


Models are wearing Mid Green. Models are wearing under-scrubs.

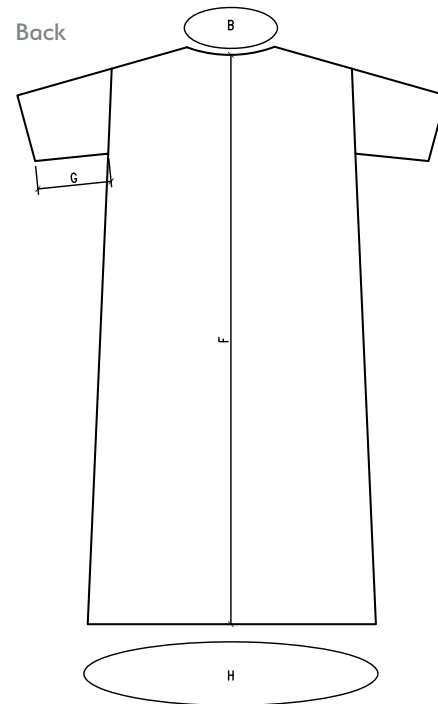
	Standard Blue Diamond	Bariatric Green Diamond	Tol. +/-
A. Not Used	N/A	N/A	15
B. Neck Opening	710	1100	15
C. Sleeve Length	465	520	15
D. Sleeve Opening	255	360	15
E. Chest	710	1050	15
F. Back Length	1220	1310	15
G. Sleeve Inseam	205	185	15
H. Sweep	1610	2220	15

	Standard Blue Diamond	Tol. +/-
A. Not Used	N/A	25
B. Neck Opening	410 min	25
C. Sleeve Length	650	25
D. Sleeve Opening	250	25
E. Chest	640	25
F. Back Length	1100	25
G. Sleeve Inseam	340	25
H. Sweep	1540	25

Front

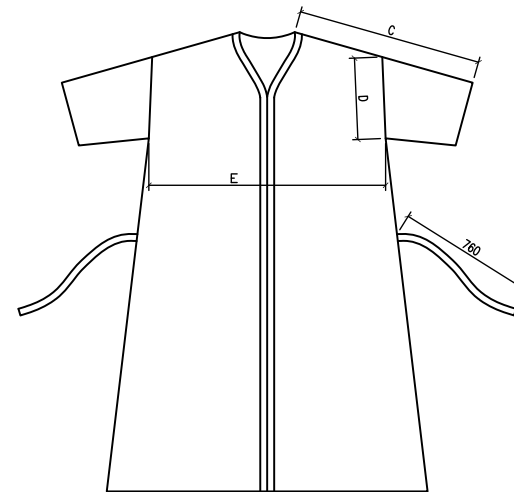


Back

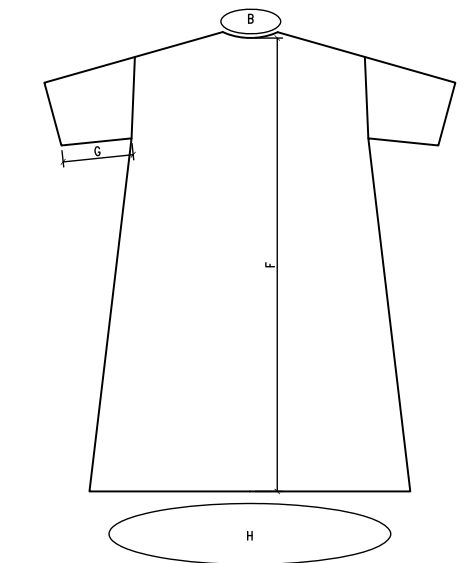


All dimensions in millimetres. Drawing not to scale. Dimensions are approximate

Front



Back



All dimensions in millimetres. Drawing not to scale. Dimensions are approximate

Under-scrubs base-layer.

Male and Female fit. Peppermint extract gives a natural deodorising finish without a mint-scent. Lightweight, seamless body with unique jacquard pattern. Breathable 4-way stretch for easy movement and all day comfort. Durable, crease resistant and easy-care.

Female under-scrub	available sizes:	<input type="checkbox"/> XS	<input type="checkbox"/> S	<input type="checkbox"/> M	<input type="checkbox"/> L	<input type="checkbox"/> XL
	available colours:	<input type="checkbox"/>	<input type="checkbox"/>	<input type="checkbox"/>		
Male under-scrub	available sizes:	<input type="checkbox"/> S	<input type="checkbox"/> M	<input type="checkbox"/> L	<input type="checkbox"/> XL	<input type="checkbox"/> 2XL
	available colours:	<input type="checkbox"/>	<input type="checkbox"/>			



Personalise your work-wear with our custom in-house embroidery



- add your own logo
- add your and your team's name
- a wide range of fonts and colours
- for bespoke requirements, please get in touch

multi-coloured logos

